

## Backer rod

### Area of application

Used as a backer rod when sealing to give the right joint shape and the right quantity of sealant

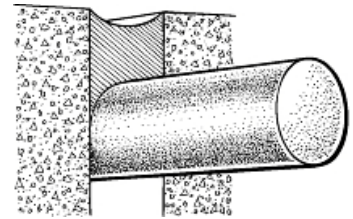
### Description

Backer rod made of polythene. For closed cells, does not absorb moisture and water, has a good

thermal insulation capacity and is resistant to alkaline solutions.

- Dimensions from 16 mm with hollow profile
- Compressible and elastic
- Not paintable

More information and safety data sheet available on [essve.com](http://essve.com)



### Cardboard packages

Item no.	Dimensions mm	For joints mm	Supplied as	Qty/ pack.	Item code
17751	6	3-5	Full roll	1500	L
17753	10	6-9	Full roll	600	L
17755	13	10-12	Full roll	400	L
17757	16	10-15	Full roll	250	L
17759	20	16-19	Full roll	150	L
17761	24	20-23	Full roll	100	L
17763	30	24-29	Full roll	80	L
17731	35	30-34	1m x 180 pcs	1	L
17733	40	35-39	1m x 120 pcs	1	L
17735	50	35-49	1m x 90 pcs	1	L
17771	10	6-9	Full roll	50	L
17773	16	10-15	Full roll	50	L
17775	20	16-19	Full roll	50	L



### Small package

Item no.	Dimensions mm	For joints mm	Qty, m/ pack.	Item code
17720	10	6-9	6	L
17722	13	10-12	6	L
17724	16	13-15	6	L
17726	20	16-19	6	L
17728	24	20-23	6	L